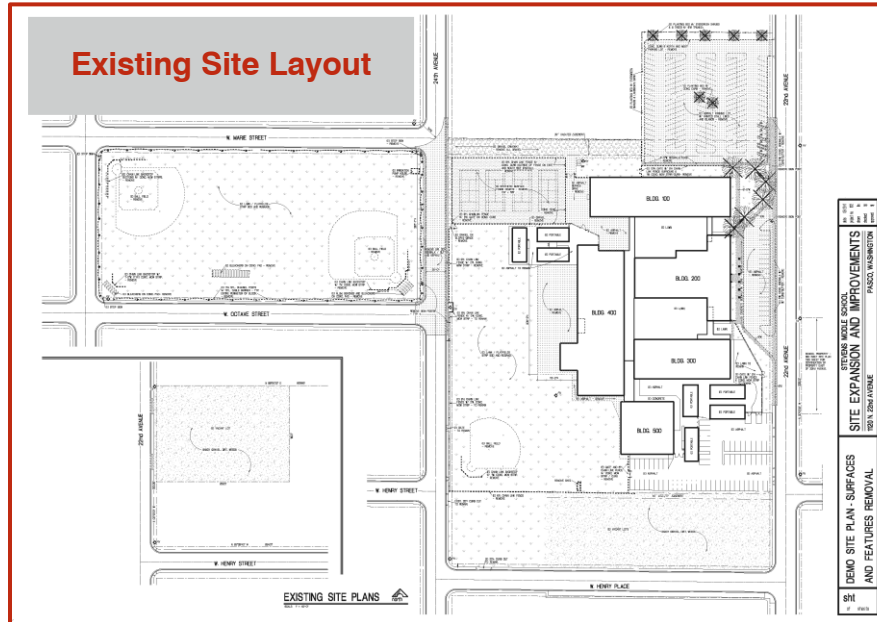


CLIENT • PASCO SCHOOL DISTRICT
 PROJECT TYPE • SITE IMPROVEMENTS
 CONSTRUCTION COST • PRELIMINARY
 YEAR COMPLETED • 2011

KEY PERSONNEL • LYNDA MONG (WITH ANOTHER FIRM)
 REFERENCE • KIM MARSH, DIRECTOR OF CAPITAL PROJECTS
 PHONE: 509.543.6096



Anticipating the passage of a school bond levy the client planned a series of site improvements at an older middle school. Ms. Mong worked with the client to determine the preliminary design: play field revision and expansion included relocation of bus and car drop-off lanes and tennis

courts, parking lot relocation and addition of a soccer field and eight lane track. This project included significant research on requirements by the city planning department to apply for a street vacation to connect the two school properties. Ms. Mong conducted title research, prepared the street vacation permit, completed the Conditional Use Permit application, compiled the SEPA Environmental Checklist and developed necessary site drawings for submission to the City of Pasco for review.

