

**CLIENT** • NORTH FRANKLIN COUNTY SCHOOL DISTRICT

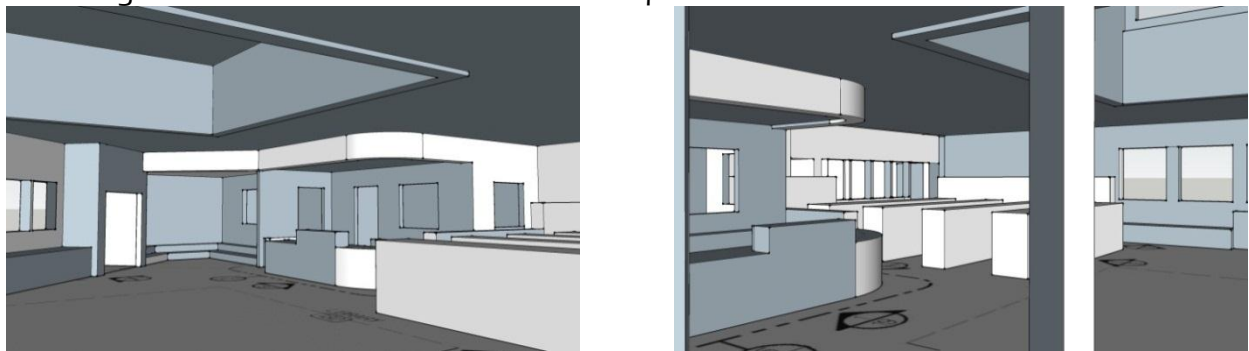
**PROJECT TYPE** • NEW CONSTRUCTION

**CONSTRUCTION COST** • \$8 MILLION

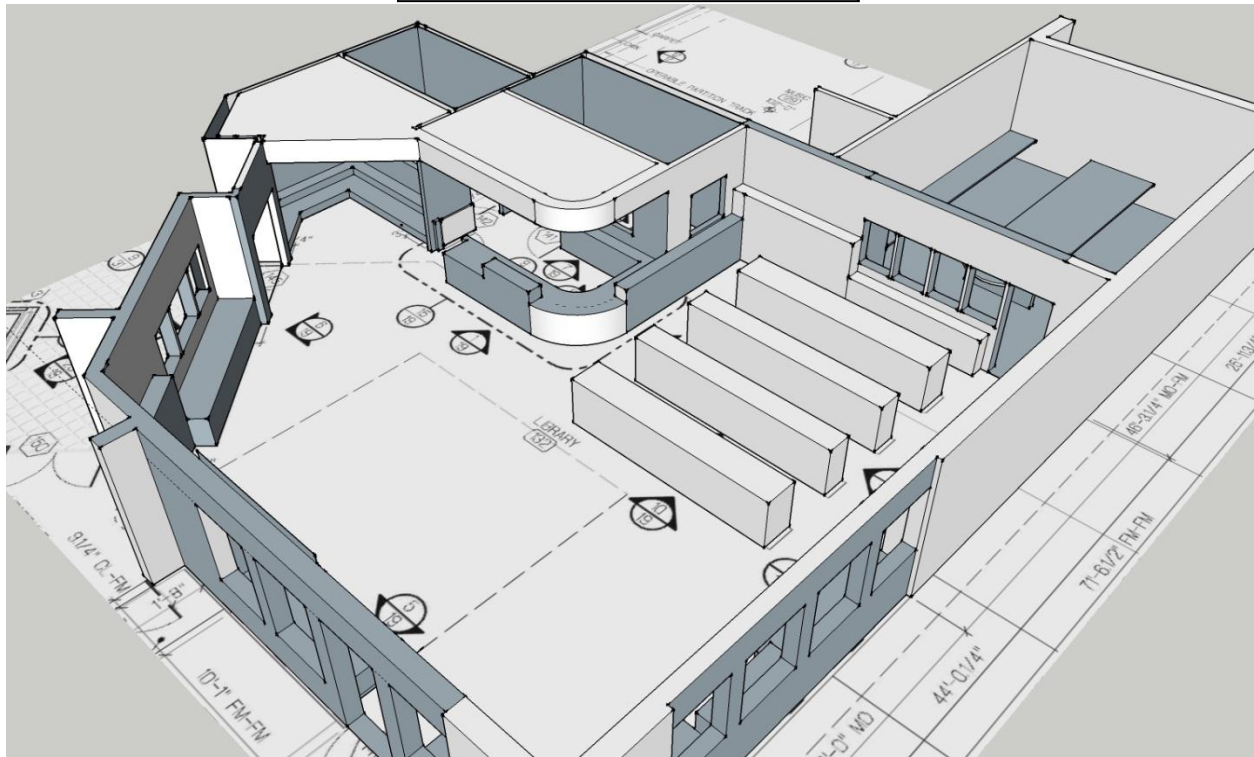
**YEAR COMPLETED** • 2011

**KEY PERSONNEL** • LYNDA MONG (WITH ANOTHER FIRM)

Ms. Mong’s areas of focus for this two-story school included the design and layout of interior spaces including specialized custom casework in music classroom, library and computer labs, administration and staff areas, and equipment storage. Ms. Mong also designed the Music/Gym/Commons areas and selected built-in equipment. An unanticipated internal reorganization during the final months of design required all team members to quickly become knowledgeable about additional aspects of the project in order to complete the contract documents on schedule. For Ms. Mong, this meant more decision making authority for casework layouts as well as additional design and documentation responsibilities. This project was designed to meet LEED Silver certification requirements.



3-D Interior Views of Library



3-D Overview of Library with Ancillary Spaces